

MUTOH

ECO-SOLVENT PRINTER

XpertJet



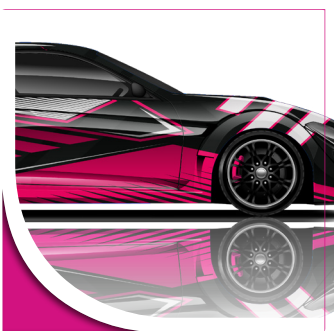
MS41
Eco-Solvent
Inks
C M Y K Lc Lm Lk



1682SR

BUILT FOR PROFESSIONALS

The **XpertJet 1682SR** 64-inch Eco-Solvent Printer from Mutoh has a staggered dual-head design that provides ultra-fast print speeds. It's capable of producing smooth gradations while delivering high-quality printing, even at reduced resolution, thanks to the 7-color ink configuration (CMYK Lc Lm Lk). The print platform is packed with features like automatic bi-directional alignments, a user-friendly touch panel, added LED lighting, and an upgraded media feed flange that allows operators to easily and quickly load media and exchange multiple rolls. These features are designed to increase user-friendly operation and maintenance while continuing to offer high production, high-quality output. The XPJ-1682SR is paired with Mutoh's MS41 Eco-Solvent ink, which offers users a larger color gamut, outstanding durability, and improved dot gain.



WRAPS



SIGNAGE



POSTERS



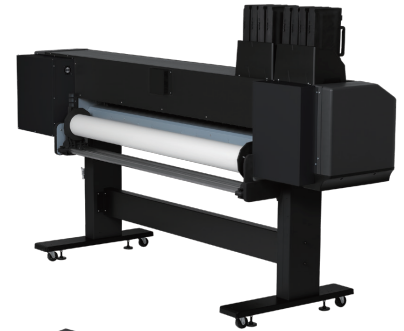
BANNER

MUTOH

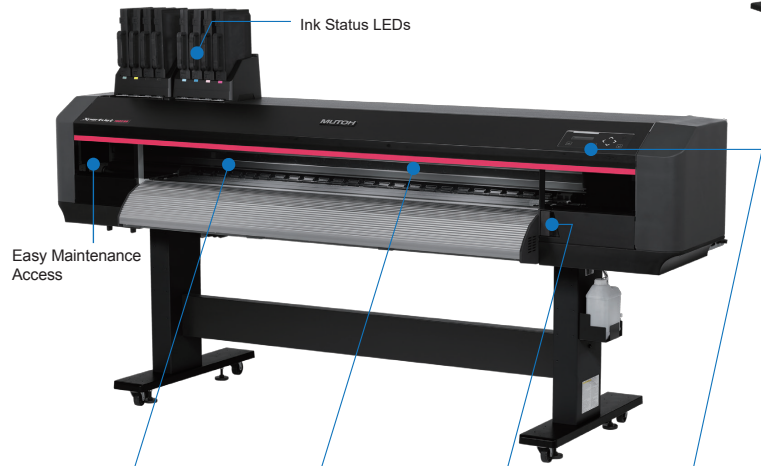
XpertJet 1682SR

EXPERTLY CRAFTED & USER-FRIENDLY

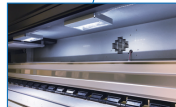
All New Platform Ensures Easy Maintenance, Usability and Quality



Newly developed media flange



High Precision Aluminum Rail Mechanism



Internal LED lighting



Multi-stage pressurizing mechanism



LED operation panel

NEW INK SET

UPGRADED TOUCH PANEL

NEW MEDIA HANDLING

AUTOMATIC ALIGNMENTS

INTERNAL LED LIGHTING

www.MUTOH.com | 1-800-99MUTOH



- **High Precision Aluminum Rail Mechanism** for high quality and stable printing.
- **Improved Media Feed Mechanism** corresponding to a wide range of media.
- **New 7 Color Eco-Solvent Ink** provides high image quality and high productivity.
- The built-in color sensor achieves **Automatic Bi-Directional Alignments**.
- The **Newly Developed Media Flange** allows for easy media loading.
- **MSM (MUTOH Status Monitor)** offers improved convenience and response.
- **Upgraded Operation Panel** with LED guide function.
- **Front Access of Ink Cartridge Holders**, LAN cable and power codes.
- **Internal LED Lighting** enable operator to easily check print status.
- **MS41 GREENGUARD Gold Certified Inks**.

XPJ-1682SR

Print head	Print method	On-demand piezo drive system
	Head height	Three-level adjustment of Low 1.5mm, Mid 2.5mm, and High 4.0mm
	Number	2 staggered
Media	Width	Maximum 64 in / Minimum 20 in
	Max. thickness	Low: 0.3mm Mid: 1.3mm High: 2.8mm
	Diameter	6 inches or less
	Tube diameter	2 inches or 3 inches
	Weight	66 lbs. or less
Maximum print width		63.6 in
Maximum print length		4921 ft
Print resolution		Max. 1440dpi
Interface		Gb-Ethernet (1000BASE-T)
Power supply	Printer	Voltage: AC 100V-120V ± 10% AC 200V-240V ± 10% Frequency: 50/60Hz ± 1 Hz
	Heater	Voltage: AC 100V-120V ± 10% AC 200V-240V ± 10% Frequency: 50/60Hz ± 1 Hz
Environment condition	Printer operation	Temperature 68°F-89.6°F Humidity: 40%-60% No Condensation
	Accuracy guaranteed	Temperature 71°F-86°F Humidity: 40%-60% No Condensation
Power consumption	Operation	AC100V-120V±10% AC200V-240V±10% 1100W or below
	Sleep mode	AC100V-120V±10% AC200V-240V±10% 30W or below
External dimensions (W) x (D) x (H)		Body: 109in x 35in x 56in (cover closed), 60in (cover opened) when installing ink bag cases: 63.5in
Weight		Main body: 322lbs. Stand: 70.5lbs
RIP software		FlexiSIGN & Print MUTOH Edition 19
Ink	Type	MS41 Eco-Solvent GREENGUARD Gold Certified Ink
	Color	4-color (K+C+M+Y) 7-color (K+C+M+Y +Lc+Lm+Lk)
	Amount	1000ml bag



GREENGUARD Gold Certified | MS41 Ink
UL 2818 - 2013 Gold Standard for Chemical Emissions
for Building Materials Finishes and Furnishings